

MACOCCO
Vitrages



SÉRISTAL IMAGE
PRINTING IN LIBERTY



New options

to decorate interior spaces:

- wall coverings
- doors
- sliding panels
- partitions...

as well as buildings:

- curtain walls, complete building façades can be styled according to your wishes
- roofs, porch roofs
- balustrades
- sun shading elements
- urban architecture & signage

in both cases it can be used to filter a certain amount of light and solar heat



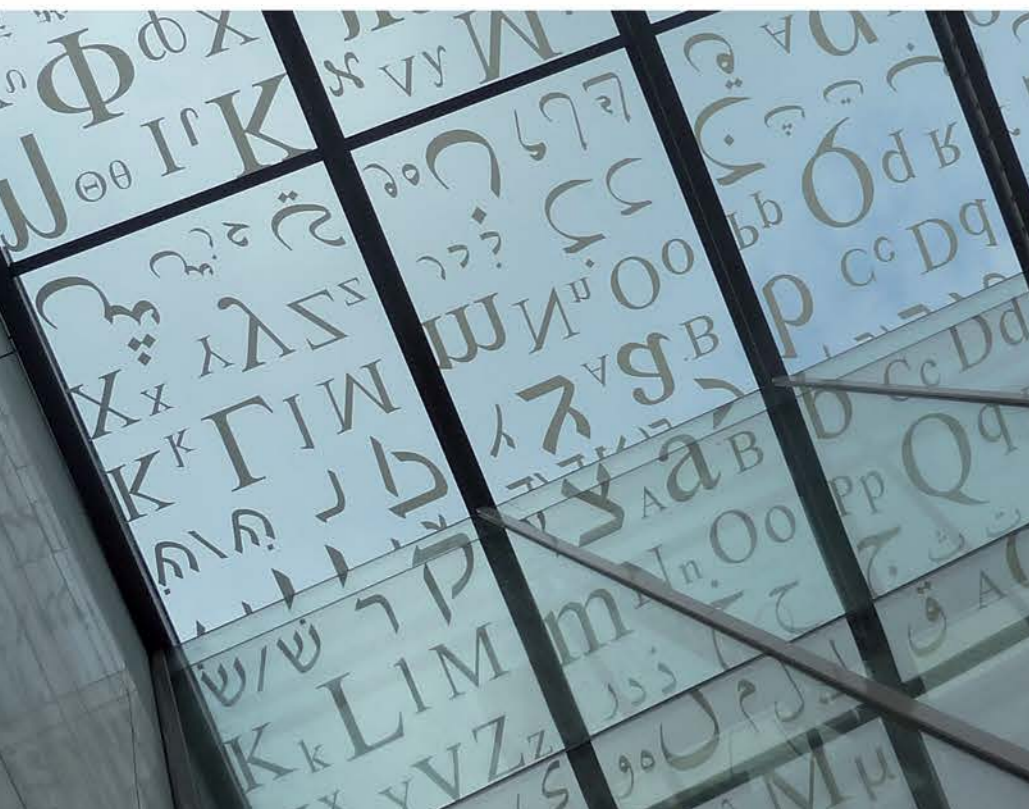
TOUGHENED GLASS

WITH A SINGLE-COLOR OR MULTI-COLOR CERAMIC INK DESIGN PRINTED ON IT



SÉRISTAL IMAGE

PRINTING IN LIBERTY



Process

We use recently developed ceramic printing inks to print directly on glass any motif converted into a digital image. After the print out, the glazing is toughened which allows the enamels to be cooked and gives extra mechanical strength to the glass.

Endless possibilities for architects and designers

- may reproduce any image you can imagine
- a full color palette can be obtained thanks to the combination of the basic colors
- multicolor print is possible with various levels of opacity
- large glass panels, up to 3600 X 2080 mm may be printed
- can be subsequently laminated or assembled in insulating glass units



SÉRISTAL IMAGE

PRINTING IN LIBERTY

Seristal image meets the requirements of international specifications

- **EN 12 150** | thermally toughened glass
- **EN 14 149** | heat soak tested glass
- **EN 12 543** | laminated glass
- **EN 1279** | Insulating glass units

Glass Dimensions

maximum :	3600 mm X 2080 mm
minimum :	360 mm X 220 mm
thickness :	4 to 15 mm

Mechanical, thermal and fragmentation properties

- same as toughened glass

Stability against chemical aggressions

- similar to glass

Digital support for modeling

- **Pictures** : tiff, bmp, jpg, psd
- **Symbols**, colour cast, logos, texts or lines: dxf, ai, pdf, eps.

The quality of the squaring always depends on that of the source file.

For more detailed information and to see our projects:

www.macocco.com/en/enamelled.html

MACOCCO
Vitrages